

Synerject (Siemens VDO) M3A

Peugeot Satelis / Geopolis Citystar

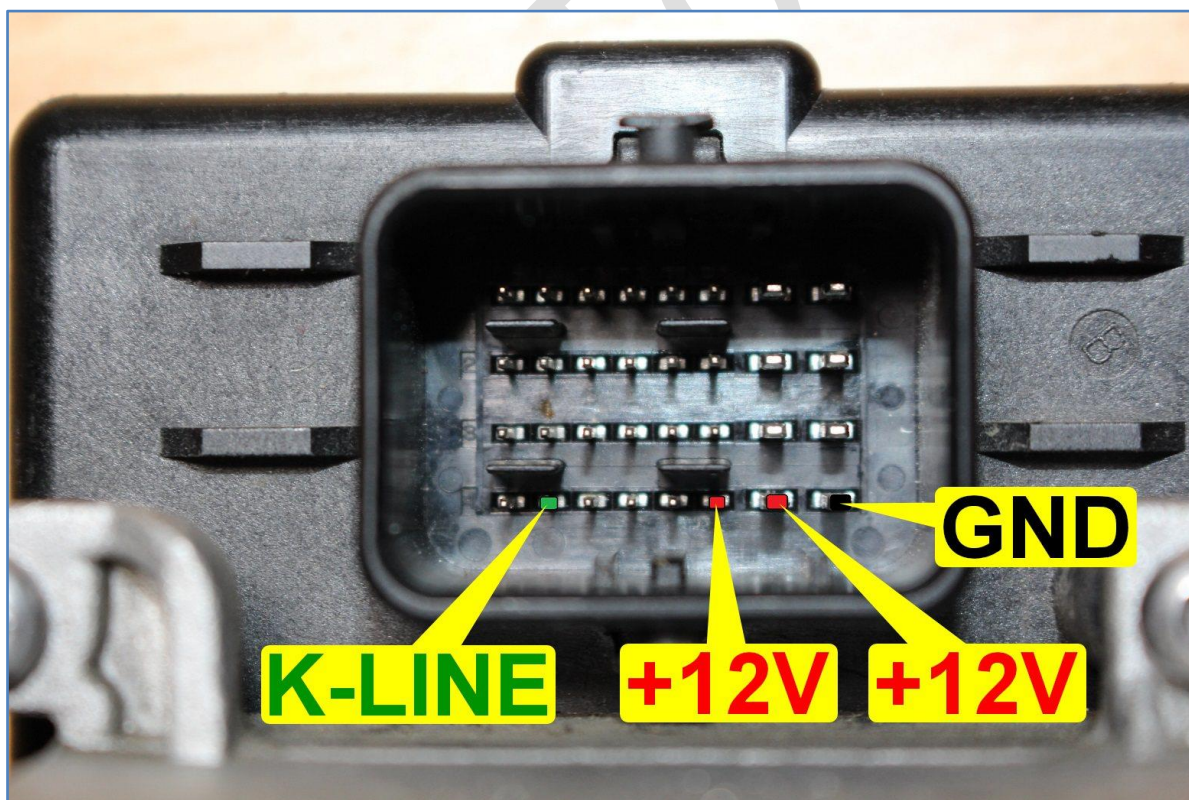
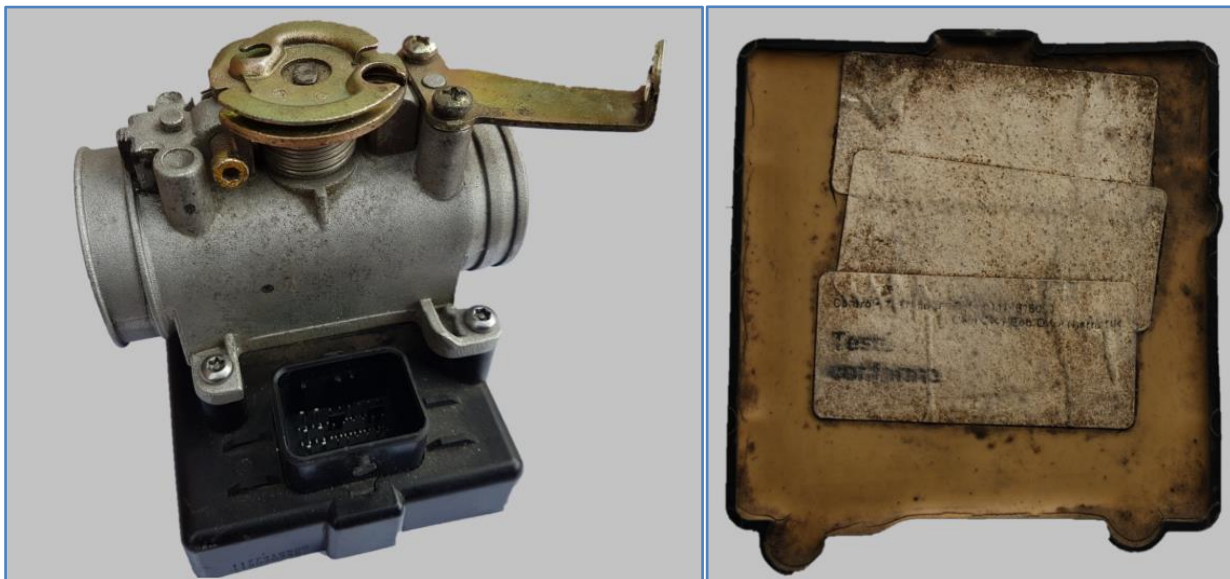
For ASW-NEXT

Short User Manual



January 2022

1. How to connect?



2. What's next?

- According to pinout picture connect ASW-NEXT cables to M3A unit
- Run PC software
- Connect USB cable from interface of ASW-NEXT to PC
- Apply +12V power to crocodile clips of ASW-NEXT

Software features:

- ✓ **Read / Write Emulated MC9S12C128 EEPROM** (2 kB) with CRC repair
- ✓ **Read / Write Calibrations** (8 kB)
- ✓ **Read / Write Software section** (64 kB)
- ✓ **Read / Write Full MC9S12C128 FLASH image** (128 kB)
- ✓ **Reset** control unit to **VIRGIN / IMMO-OFF** state
- ✓ **Read / Write** MASTER KEY value from / to emulated EEPROM
- ✓ **Transfer pairing data** to **M3A** from EEPROM dump of **IMM006**

NOTE: To make M3A operate in IMMO-OFF mode:

- **Reset M3A to VIRGIN**
- **Disconnect plug from IMM006 immobilizer unit in the scooter before to turn-on ignition for the first time. Leave IMM006 disconnected at all.**

M3A will remain in IMMO-OFF mode without receiving a valid signal from immobilizer unit.